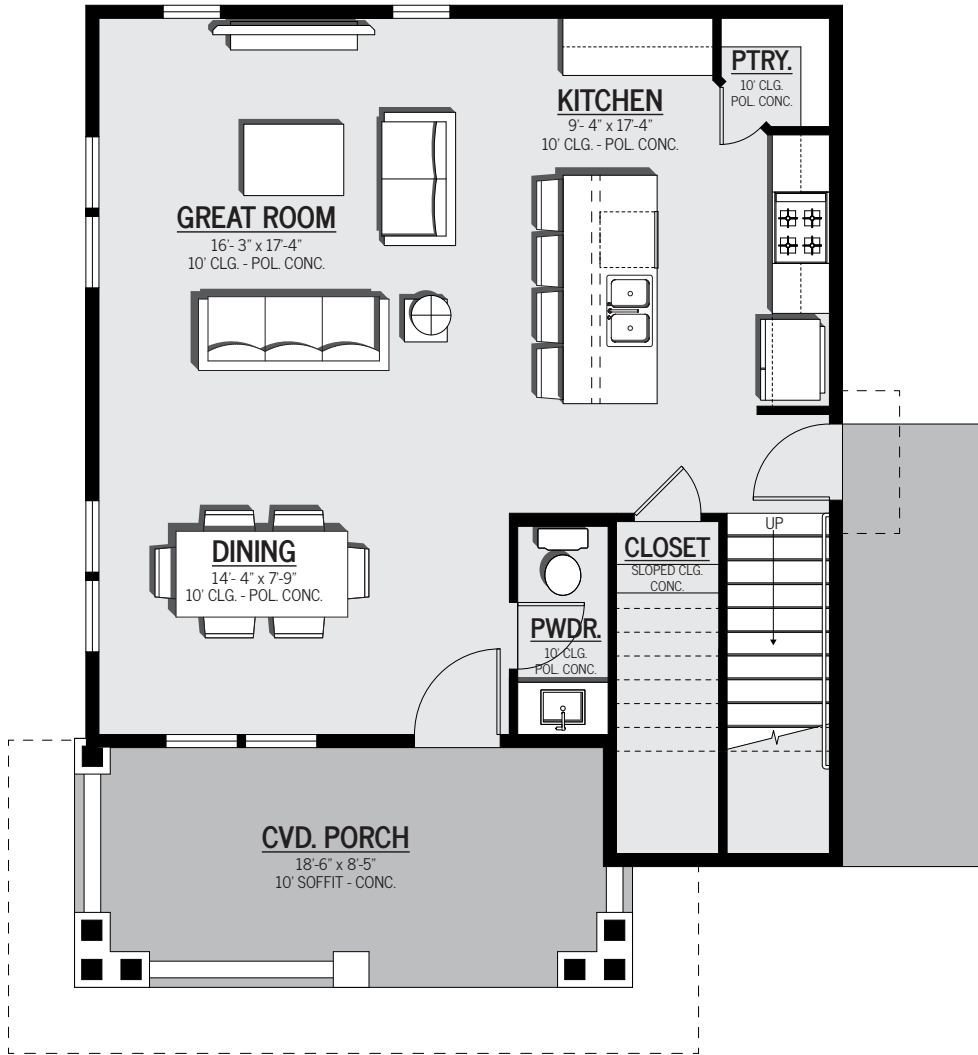


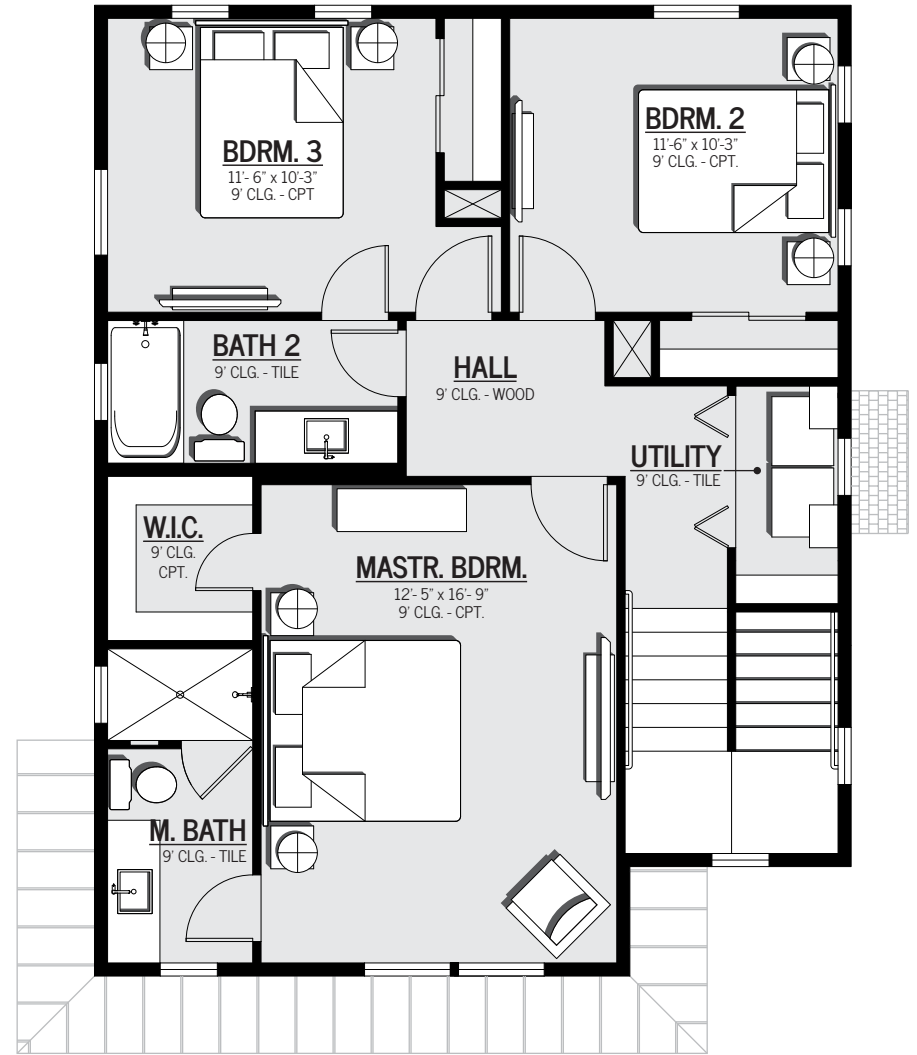
Floor 1

724 s.f.



Floor 2

800 s.f.



**Floor Plans shown are not to any particular scale and are subject to change. All dimensions are approximate and may vary from the description and definition of the "unit" as set forth in the purchase contract. Please review the contract documents for a description of how the units are measured.

Floorplans - 901 N. Pine St.

3 BED / 2.5 BATH
TOTAL LIVING: 1524 SF

